

International Classification of Diseases – Maternal Mortality (ICD-MM) Reference Aid

Groups of the Underlying (Primary) Cause of Death during Pregnancy, Childbirth and Puerperium

Definitions of deaths:

Pregnancy Related Deaths:

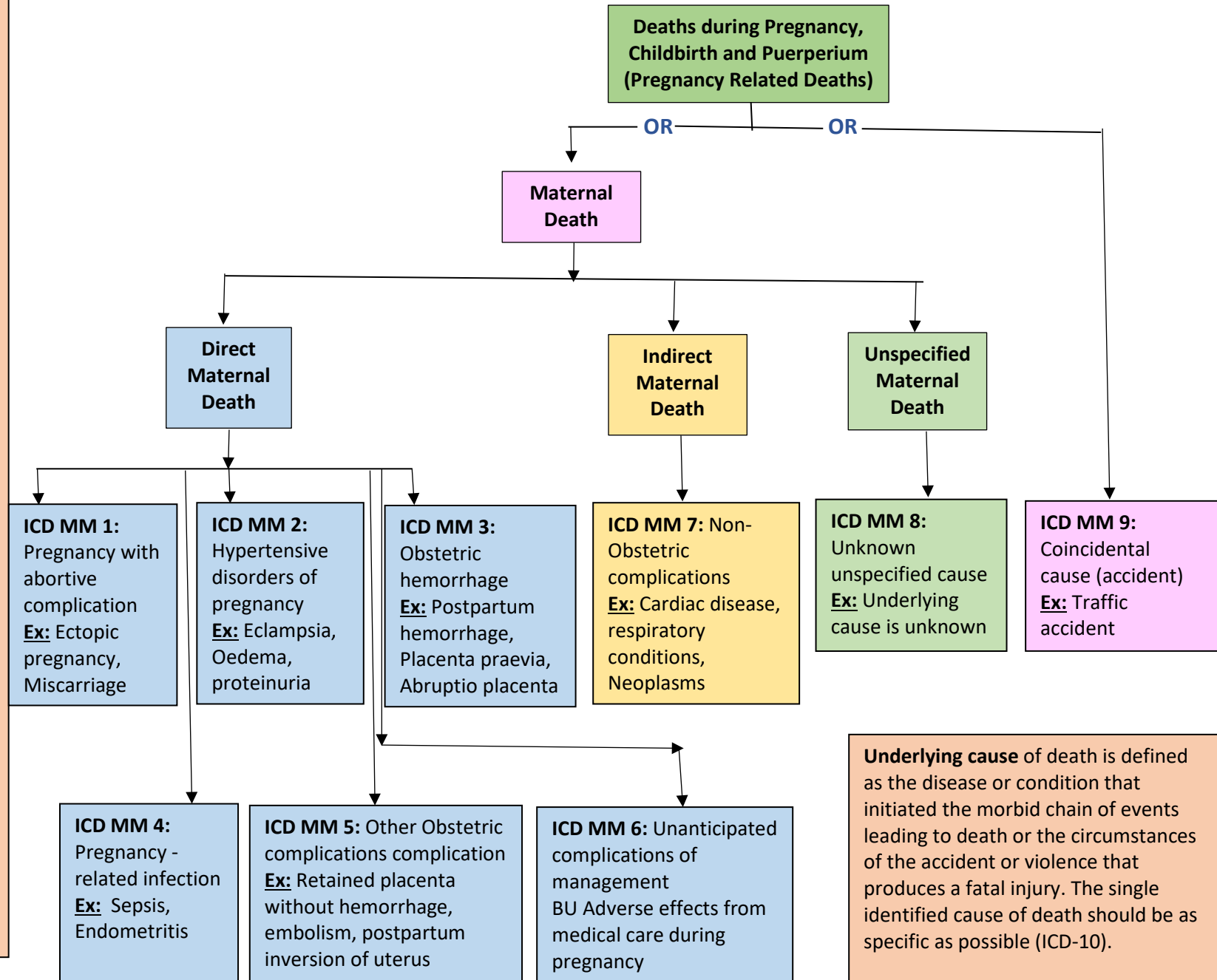
Death occurring during pregnancy, childbirth and the puerperium is the death of a woman while pregnant or within 42 days of termination of pregnancy, irrespective of the cause of death.

Maternal Deaths: A

maternal death is the death of a woman while pregnant or within 42 days of termination of pregnancy, from any cause related to or aggravated by the pregnancy or its management, but not from accidental or incidental causes (irrespective of the duration and the site of the pregnancy).

Late Maternal Deaths: A

late maternal death is the death of a woman from direct or indirect causes more than 42 days but less than one year after termination of pregnancy.



Underlying cause of death is defined as the disease or condition that initiated the morbid chain of events leading to death or the circumstances of the accident or violence that produces a fatal injury. The single identified cause of death should be as specific as possible (ICD-10).